



# Socratec

## GPS-based Tracking System

### FleetView XSL

It does not matter whether you need an electronic logbook for tax saving purposes, you like to monitor your vehicle fleet conveniently or you want to prevent vehicle theft – Socratec is the favourable telematic solution for all purposes.

#### Features

##### GPS-Positioning:

- Actual position of your vehicles on an electronic map
- Detailed tour history as map and table view
- Detailed electronic logbook (including speed information) for each vehicle
- Downtime report based on an address database
- Geofencing based on an address database
- Alarm messages by SMS or e-mail based on geofences, digital inputs, battery alarm, start, stop, drive message
- Overspeed alarm on map, by SMS and email
- 2 digital outputs (e.g. to shutdown the vehicle)
- 2 digital inputs for ignition monitoring and electronic on-site alarm
- Power supply input 10V-30V
- Group function

##### Electronic logbook:

- Fully automatic operation without influence of the driver possible
- Tamper proof because of power failure alarm and automatically generated drive numbers by the system
- Intermediate storage of tour data in case of missing GSM grid – no loss of data!
- Alignment with tacho data (input of km-status of the tachometer)
- Convenient marking of private and business trips by internet access or pressing a button inside the vehicle
- Input of tour purpose via internet
- Untampered data according to requirements of tax authorities by hosting at a provider – no direct data access
- Print with print date
- Address manager for often approached addresses (e.g. customers) – easy registration of addresses

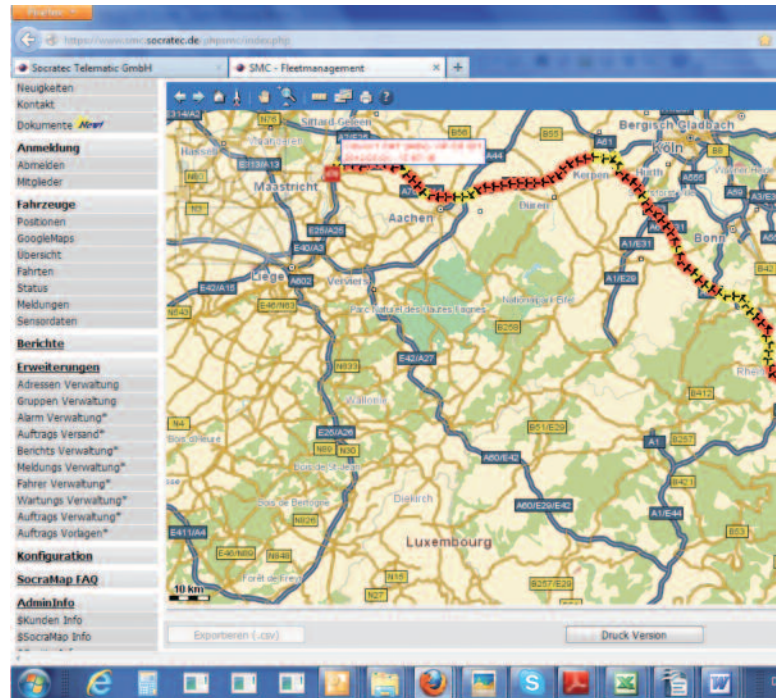
#### Dimensions

##### FleetView XSL

- 72 x 70 x 28 mm without backup-battery



*Fleet View XSL will be installed at a hidden place in the vehicle*



*Monitor your vehicle fleet in a protected range in the internet*

Socratec Telematic GmbH  
 Jakobsweg 18  
 64625 Bensheim  
 Germany  
 Tel. +49 6251 8540-972  
 Fax +49 6251 8540-973  
 info@socratec.de  
 www.socratec.de

