

Be at the Right Time at the Right Place

with Socratec Telematic Solutions

socraflite 

The easy-to-use real-time cargo monitoring solution for monitoring air cargo containers and air freight

SocraFlite

GPS-Positioning, Temperature
and Shock Monitoring, Theft Alert




socratec
Satellite Telematic Solutions

SocraFlite GPS-Positioning, Temperature and Shock Monitoring, Theft Alert

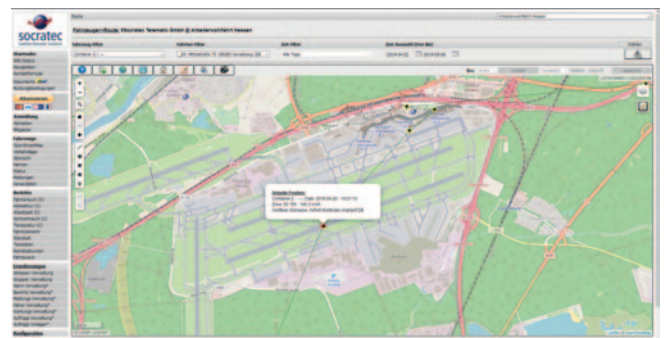
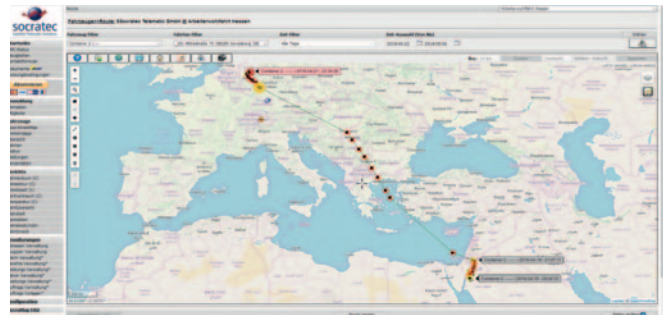


SocraFlite is a new and innovative GPS-tracking solution for real-time monitoring of air cargo.

SocraFlite is an easy-to-use system with automatic handling, real-time data transfer via mobil network and a secured world-wide web access to the software platform.



The real-time monitoring system SocraFlite



SocraFlite enables fully control over the actual location of airfreight and the transport history



Advantages at a glance

- SocraFlite uses GPS/GSM-technology without additional external infrastructure. It is therefore cost-efficient.
- The system meets all specific requirements of the aviation industry, especially automatically shutting down the GSM-modem during flight, the battery system and electromagnetic compatibility.
- SocraFlite is certified by EASA and accepted on Lufthansa flights and an increasing number of other carriers.

Features

Functionality

- GPS/Galileo/Glonass positioning system
- GSM/GPRS quad band module for automatic real-time data communication via mobile network
- Interim data memory to store 100.000 positions for offline tracking
- Temperature monitoring
- Shock sensor (ACC, 3-axis, thresholds definable)
- Alarm manager

Easy to use and future oriented

- Easy-to-use web platform
- Interface to ERP system possible
- Remote software update over the air
- Configurable over the air

Unbeatable long life cycle

- Maintenance-free
- Ruggedized housing
- Harsh climate conditions: -25° C to 60° C
- Long-life rechargeable battery (life-time ca. 1-2 years with 4-8 messages per day)

Flexible and easy mounting options

- Bonding or using industry hook-and-loop fastener
- Screwing for safe fixing
- Magnets
- Flexible usage without mounting

Fully cost control

- One-time payment and low monthly charges
- Worldwide communication flatrate
- Alternative: monthly rent

Housing

- Measures l x w x h: 135 mm / 68 mm / 35 mm, weight: 450 g
- Housing protection: IP68 (IP69k)

Battery

- Lithium iron phosphate battery (LiFePO4) 3,2 V / 6000 mAh rechargeable

Socratec Telematic GmbH
Jakobsweg 18
64625 Bensheim
Germany
Tel. +49 6251 8540-972
Fax +49 6251 8540-973
info@socratec.de
www.socratec.de

