

# Be at the Right Time at the Right Place

with Socratec Telematic Solutions

The easy-to-use real-time cargo monitoring solution for monitoring containers, swap bodies, palettes and other freight

## SocraCargo

GPS-Positioning, Temperature  
and Shock Monitoring, Theft Alert



# SocraCargo GPS-Positioning, Temperature and Shock Monitoring, Theft Alert

SocraCargo is a flexibly configurable and extreme ruggedized battery-based system for real-time cargo monitoring applications where there is no external power supply such as swap bodies, containers or palettes and other freight.

The intelligent energy management enables long maintenance free intervals without recharging the battery. The sensor set (acceleration sensor (shock), temperature sensor, GPS-sensor) makes alarms possible for many applications in logistics, vehicle management and outdoor object tracking in order to increase security and efficiency in logistics.

## Features

### Functionality

- GPS/Galileo/Glonass positioning system
- GSM/GPRS quad band module for automatic real-time data communication via mobile network
- Interim data memory to store 100.000 positions for offline tracking
- Temperature monitoring
- Shock sensor (ACC, 3-axis, thresholds definable)
- Alarm manager

### Easy to use and future oriented

- Easy-to-use web platform
- Interface to ERP system possible
- Remote software update over the air
- Configurable over the air

### Unbeatable long life cycle

- Maintenance-free
- Ruggedized housing
- Harsh climate conditions: -25° C to 60° C
- Long-life rechargeable battery (life-time ca. 1-2 years with 4-8 messages per day)

### Flexible and easy mounting options

- Bonding or using industry hook-and-loop fastener
- Screwing for safe fixing
- Magnets
- Flexible usage without mounting

### Fully cost control

- One-time payment and low monthly charges
- Worldwide communication flatrate
- Alternative: monthly rent

### Options

- External temperature sensor
- External humidity sensor
- External shock sensor

### Housing

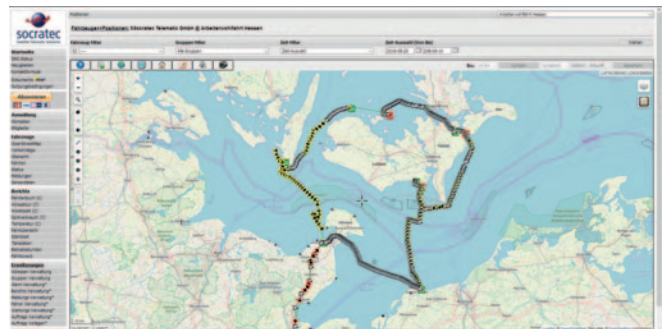
- Measures l x w x h: 135 mm / 68 mm / 35 mm, weight: 450 g
- Housing protection: IP68 (IP69k)

### Battery

- Lithium iron phosphate battery (LiFePO4) 3,2 V / 6000 mAh rechargeable



Container and swap body tracking device SocraCargo (above)  
SocraCargoLock with security cable (below)



SocraFlite enables fully control over the actual location of your freight.



Socratec Telematic GmbH  
Jakobsweg 18  
64625 Bensheim  
Germany  
Tel. +49 6251 8540-972  
Fax +49 6251 8540-973  
info@socratec.de  
www.socratec.de

  
**socratec**  
Satellite Telematic Solutions

## SocraCargoLock

As SocraCargo, but with security cable to lock containers. An SMS or e-mail alarm is sent when it is opened or the cable is destroyed.